

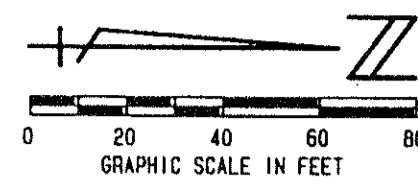
0587-014

171

STATE OF FLORIDA
COUNTY OF PALM BEACH

THIS PLAT WAS FILED FOR
RECORD _____ DAY OF _____
AD, 1995 AND DULY RECORDED
IN PLAT BOOK _____ ON PAGES
_____ AND _____
DOROTHY H. WILKEN, CLERK
BY: _____ D.C.

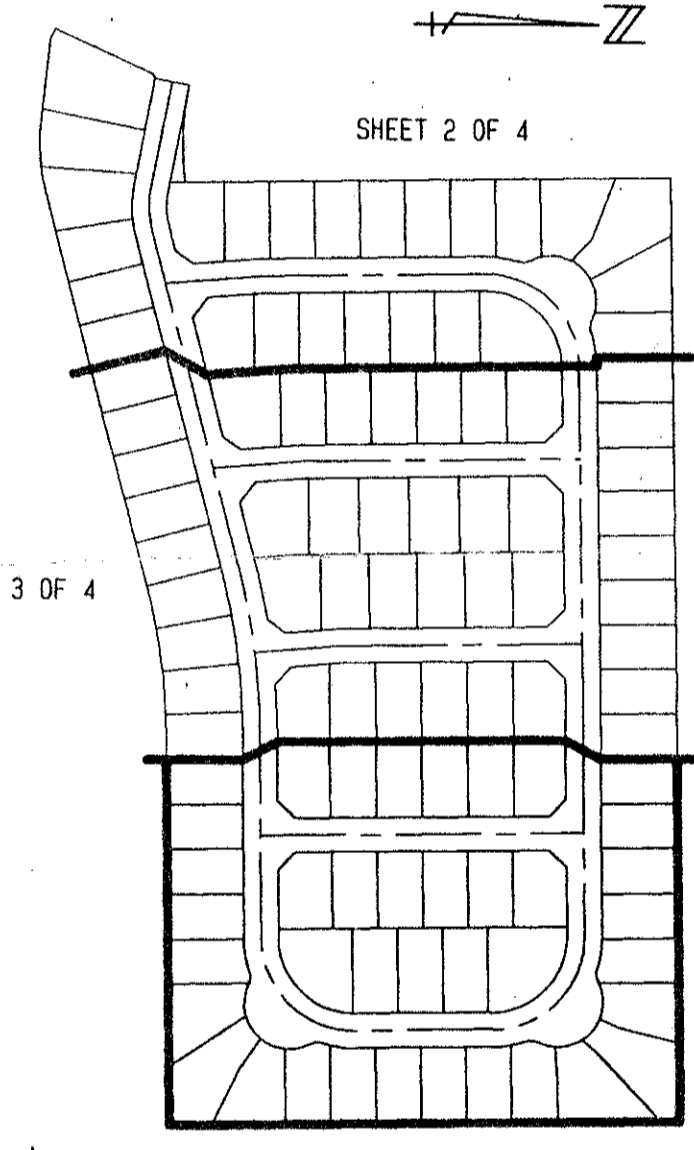
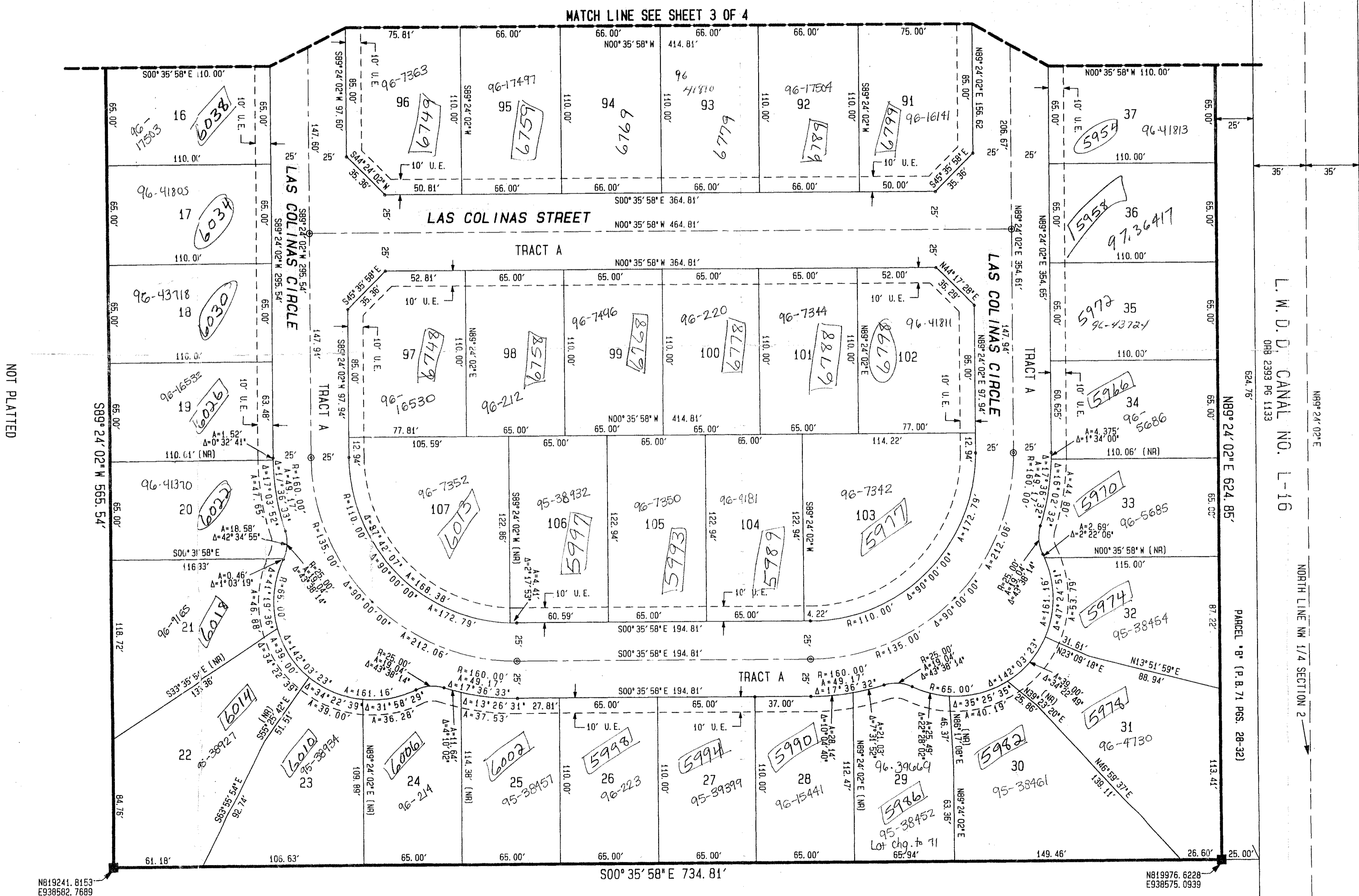
CIRCUIT COURT SEAL



WINSTON TRAILS PARCEL SIX

PART OF WINSTON TRAILS P. U. D.
BEING A REPLAT OF PARCEL F, WINSTON TRAILS PLAT ONE
(P. B. 71, PGS. 28 - 32)
SITUATE IN SECTIONS 2 & 3, TOWNSHIP 45 SOUTH, RANGE 42 EAST
PALM BEACH COUNTY, FLORIDA
JANUARY, 1995
SHEET 4 OF 4

- LEGEND:
- L. M. D. D. LAKE WORTH DRAINAGE DISTRICT
 - FPL FLORIDA POWER & LIGHT
 - ORB OFFICIAL RECORD BOOK
 - PBCO PALM BEACH COUNTY
 - P. B. PLAT BOOK
 - Pd. PAGES
 - PG. PAGE
 - U. E. UTILITY EASEMENT
 - D. E. DRAINAGE EASEMENT
 - A. E. ACCESS EASEMENT AND MAINTENANCE EASEMENT
 - TWP. TOWNSHIP
 - RGE. RANGE
 - (NR) NON RADIAL
 - CENTER LINE
 - PERMANENT CONTROL POINT
 - PERMANENT REFERENCE MONUMENT
 - SET PLS. 4763
 - ⊠ PERMANENT REFERENCE MONUMENT FOUND



SHEET INDEX
(NOT TO SCALE)

**PET. 87-112
ALLOC #0001
5/2/2/I**

ALL DISTANCES ARE GROUND
SCALE FACTOR - 1.0000532

THIS INSTRUMENT WAS PREPARED BY MARY HANNA CLODFELTER, P.L.S. IN THE
OFFICES OF MOCK, ROOS & ASSOCIATES, INC., 5720 CORPORATE WAY, WEST PALM
BEACH, FLORIDA 33407.

MOCK, ROOS & ASSOCIATES, INC. 5720 CORPORATE WAY, WEST PALM BEACH, FL 33407 (407) 683-3113	
SCALE: 1"=40'	DATE: NOVEMBER 1994
P. A. NO. 94156.00	DWG. NO. 45-42-03-15
WINSTON TRAILS PARCEL SIX PART OF WINSTON TRAILS, P. U. D. SECT. 2 & 3, TOWNSHIP 45 SOUTH, RANGE 42 EAST	

0587-014

TAZ-437

REVISIONS: WINSTON TRAILS
PAGE 171
FLOOD MAP #1730
DATE 5/2/94
BY: MARY HANNA CLODFELTER
CHECKED BY: MARY HANNA CLODFELTER
DATE 5/2/94
BY: MARY HANNA CLODFELTER

Rev. 3-08-95
CADD FILE
WINTP16

NOT PLATTED

SHEET 4 OF 4